

# Arecibo posmatranja ostatka supernove G42.8+0.6

poseta VLA interferometru i učešće na  
200-tom mitingu AAS u Albuquerkiju

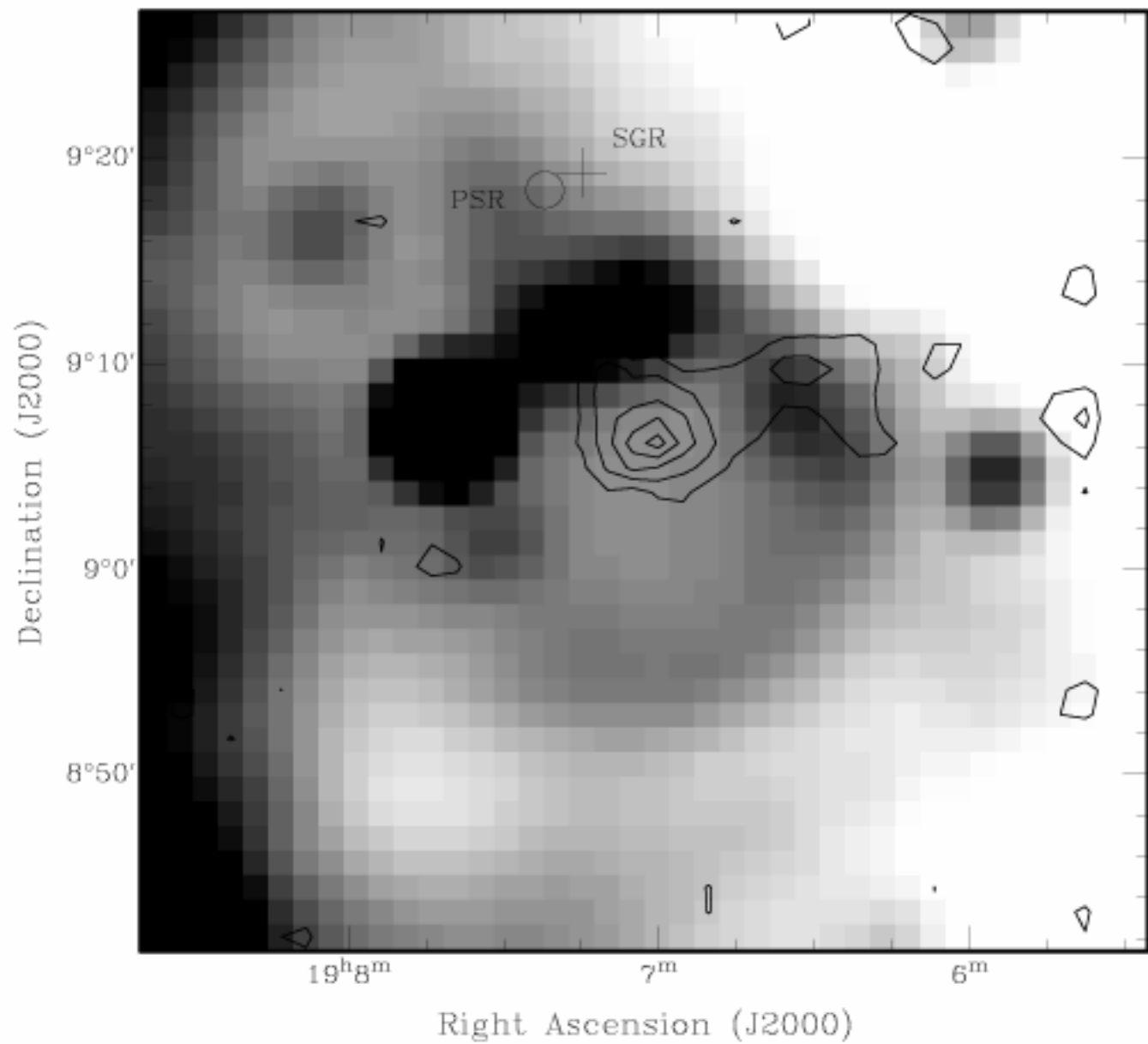


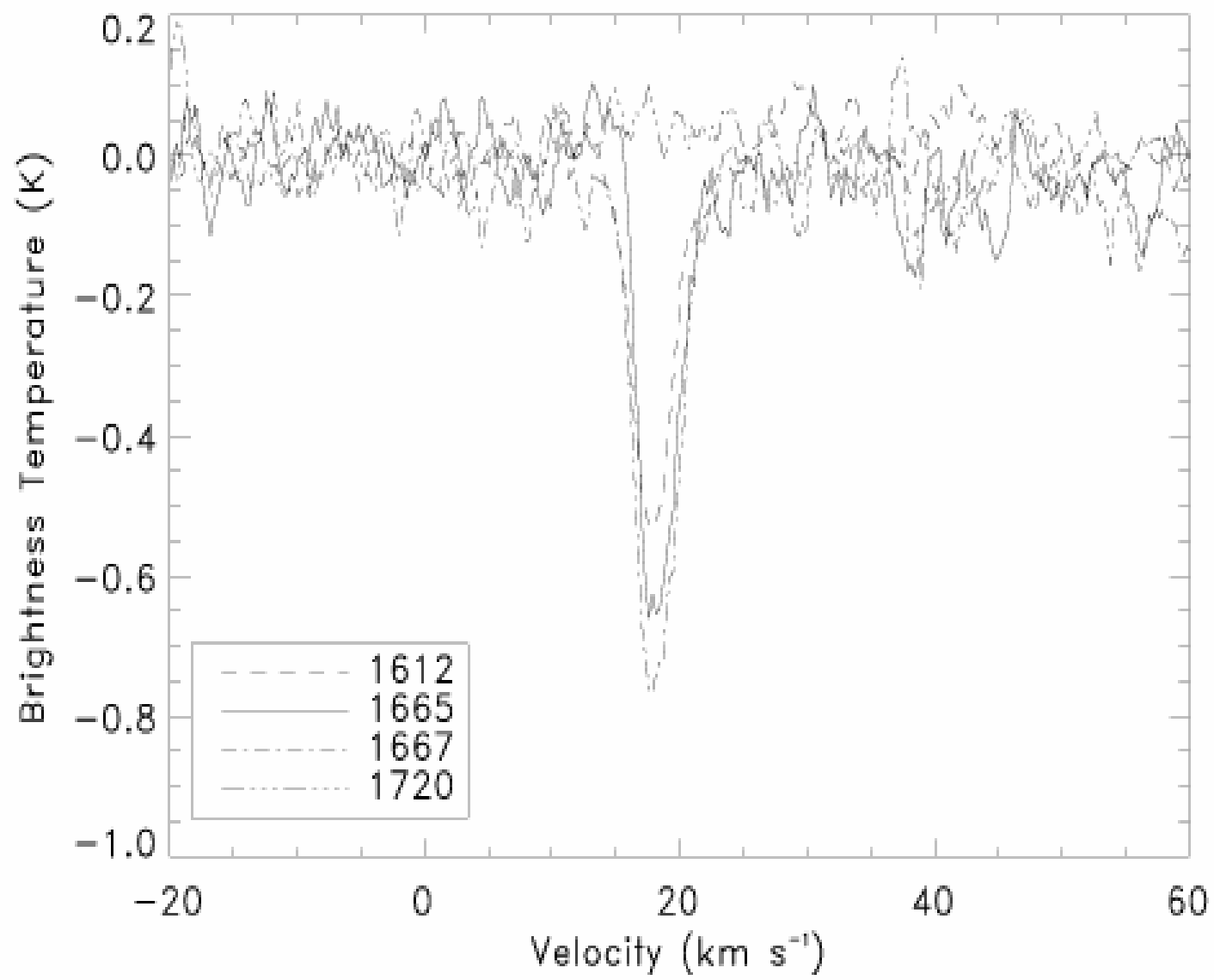
# Posmatranja

- SNR G42.8+0.6:  $S(1420 \text{ MHz})=2.5 \text{ Jy}$ ,  $\theta=24'$ ,  $\alpha=0.5(?)$
- Posmatranja u kontinuumu: 430 MHz, 1420 MHz i 2700 MHz
- U linijama: HI (1420 MHz), OH (1665 i 1667 MHz) i OH maser na 1720 MHz
- Polarizaciona posmatranja u kontinuumu u punom Stoksovom modu
- Polarizaciona posmatranja (DM, RM) za pulsare: PSR J 1907+0918 i SGR 1900+14

# Preliminarni rezultati

- Daljina iz apsorpcije OH dubleta:  $11 \pm 3$  kpc
- Moguća povezanost sa PSR J1907+0918 (najnovija daljina do ovog pulsara  $8 \pm 1$  kpc)
- Identifikovana apsorpcija linije OH u regionu iljuske ostatka supernove G42.8+0.6
- Najverovatnije je u pitanju interakcija molekularnog oblaka sa ostatkom supernove











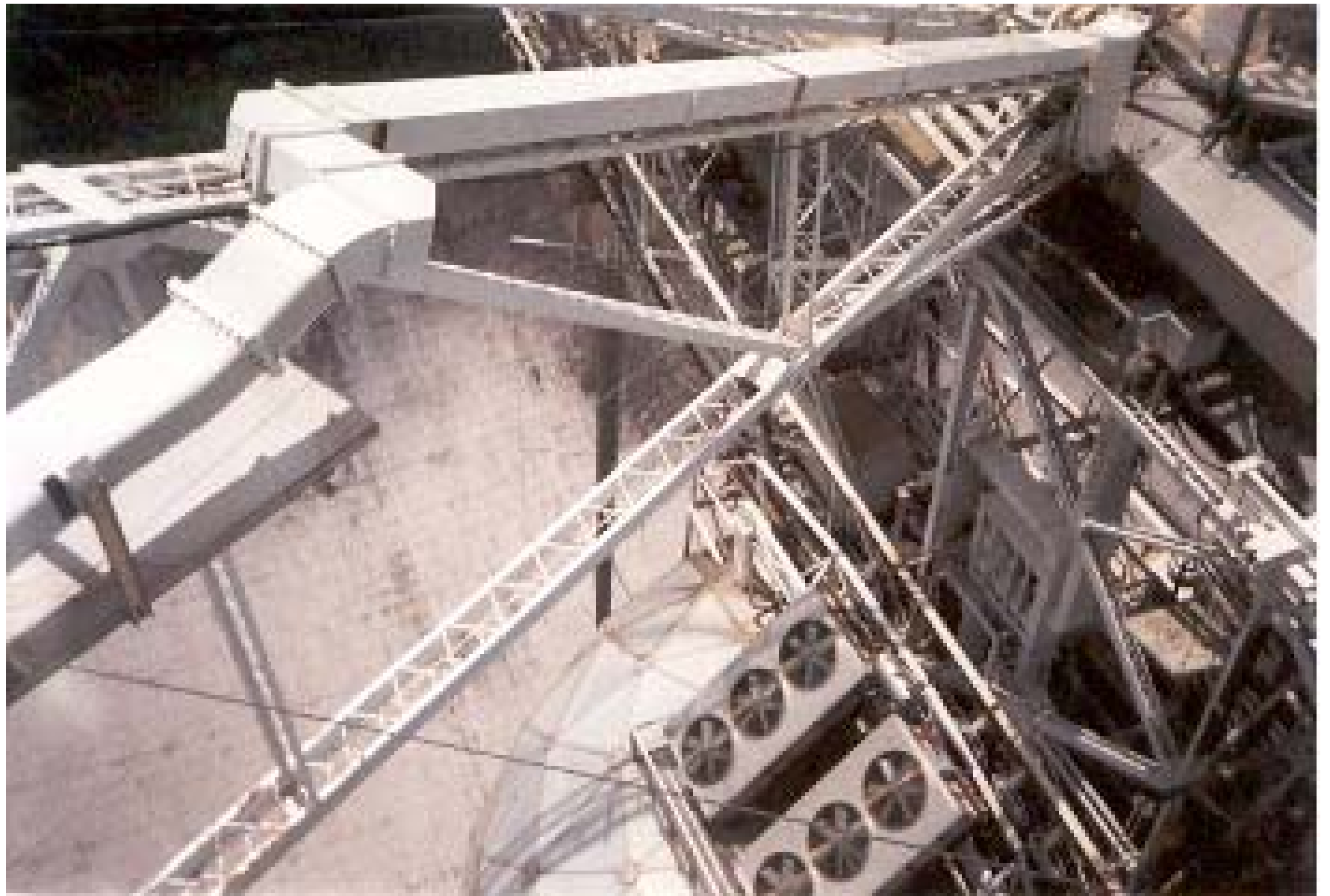










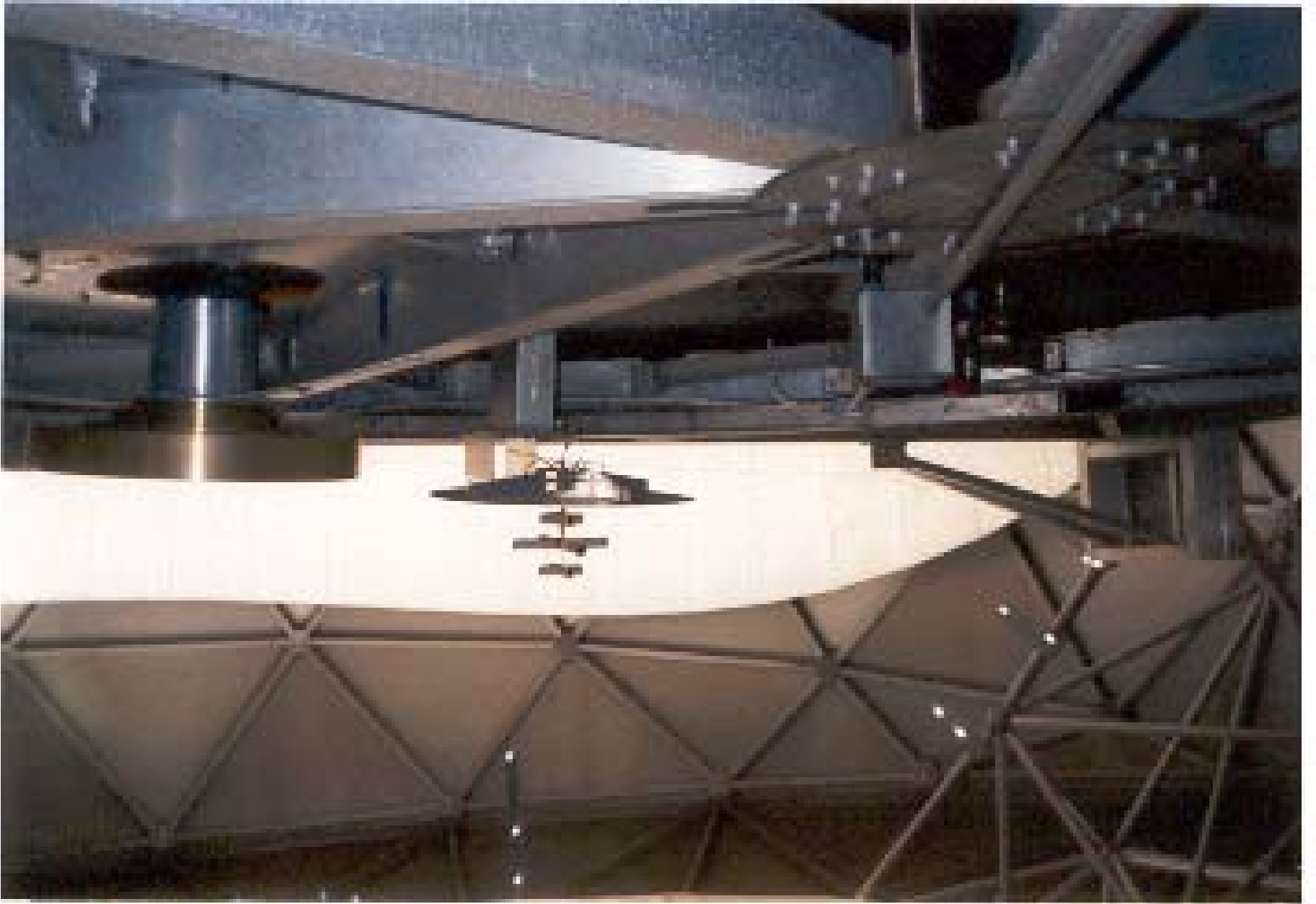






















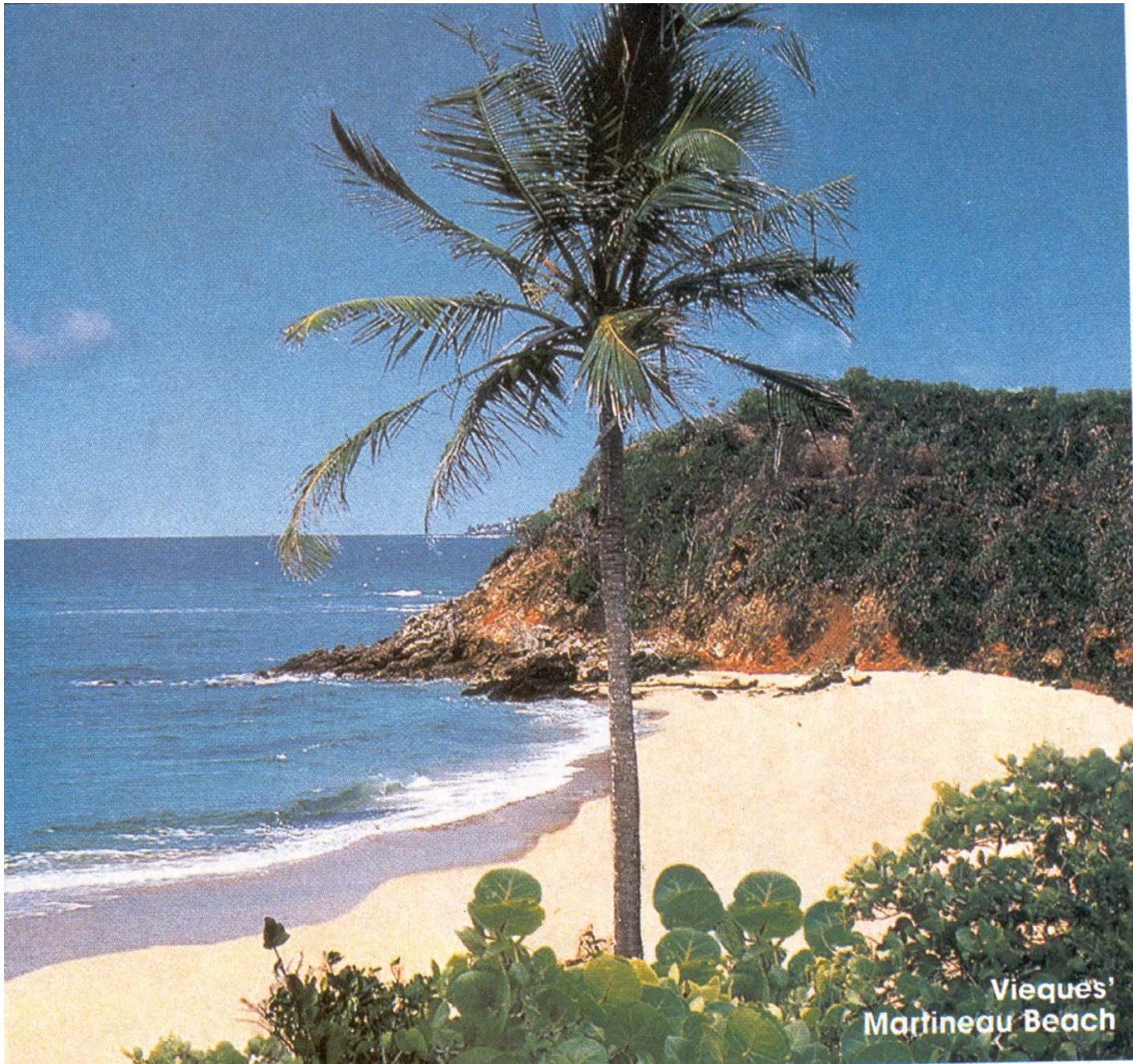












Vieques'  
Martineau Beach





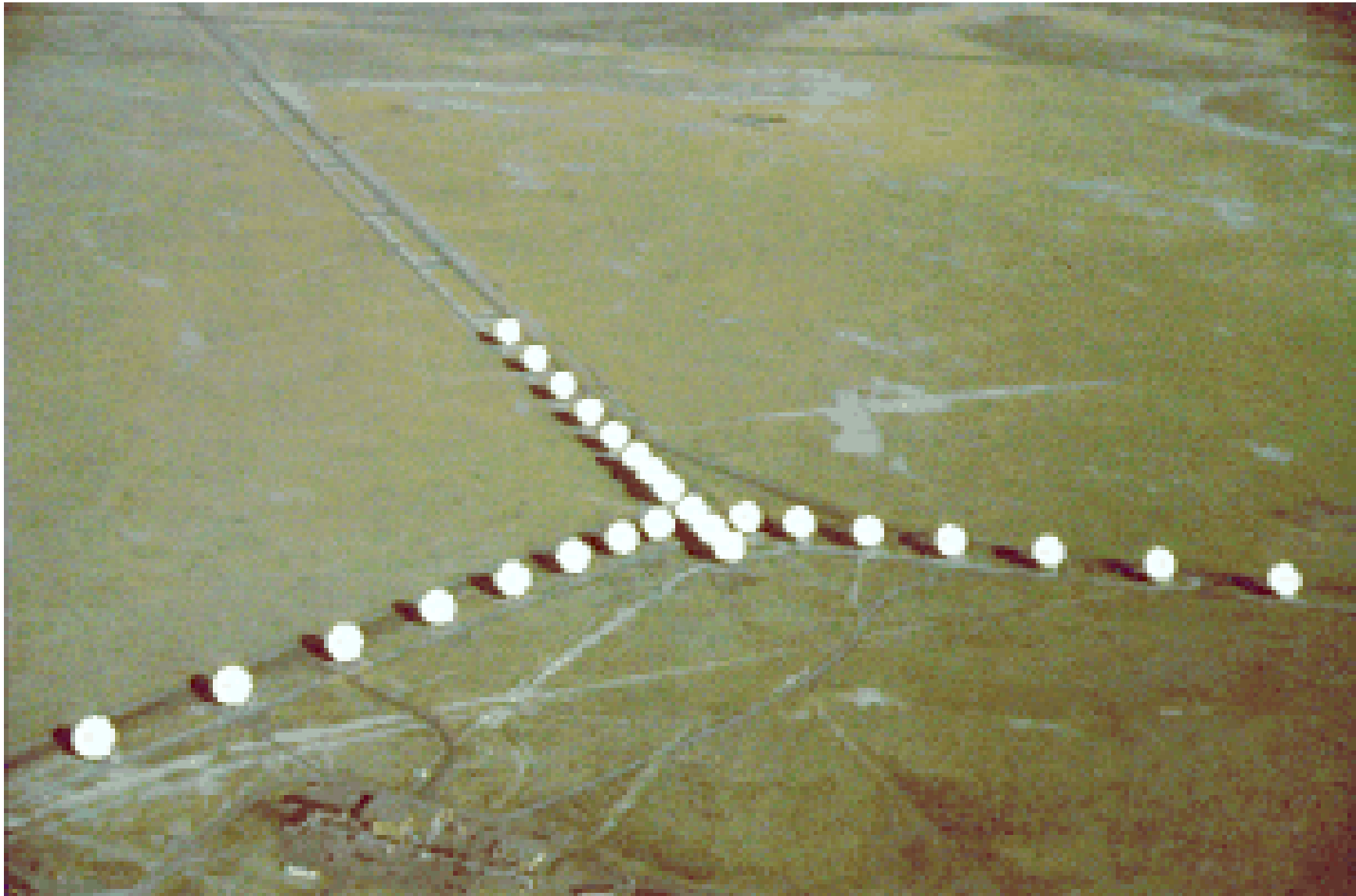






El Yunque























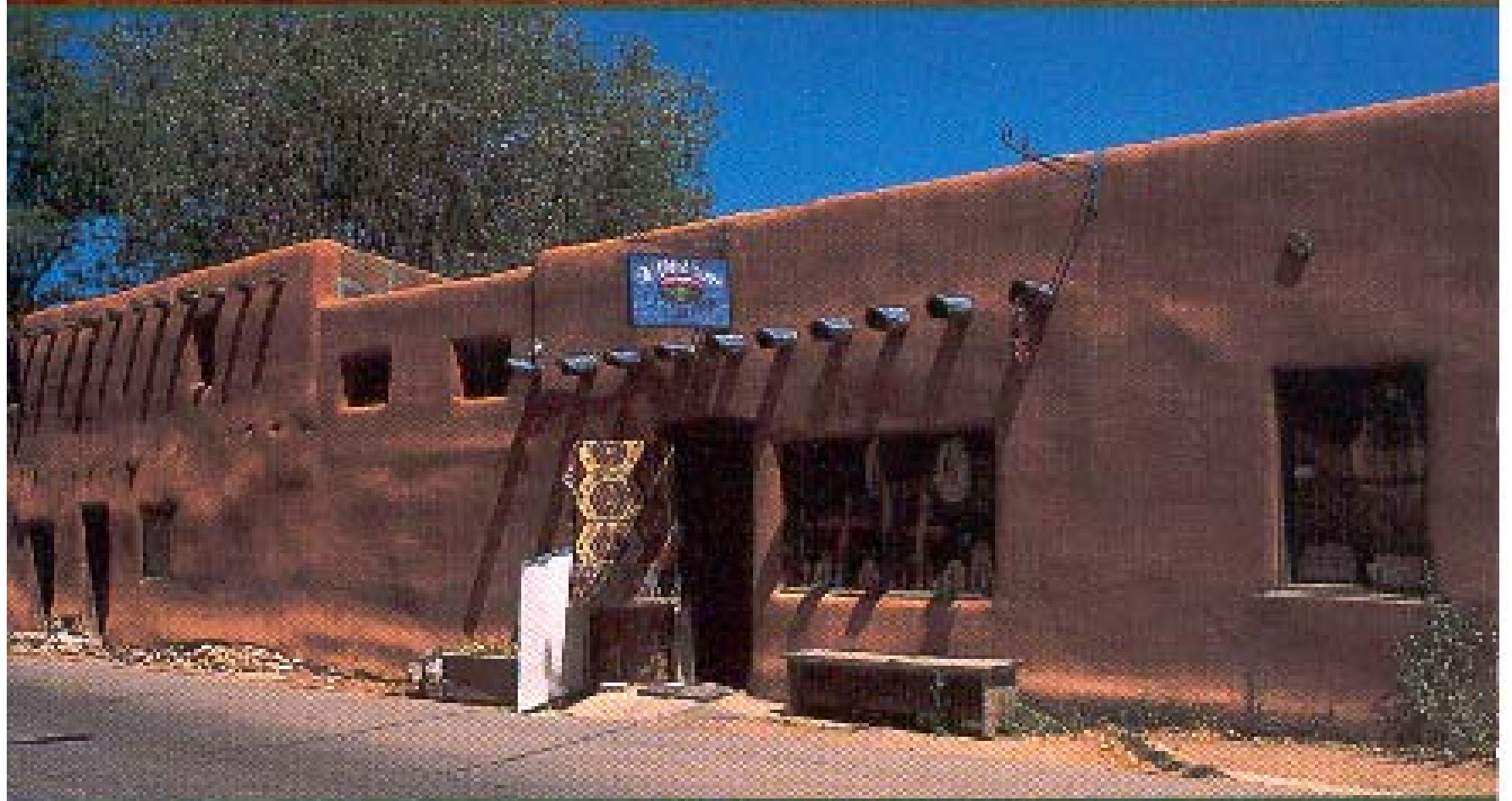




ALBUQUERQUE  
NEW MEXICO  
1706



# THE OLDEST HOUSE



SANTA FE











*Taos*

